



蓄势即发、科技无限、
不断进取，永不停息、
创国际品牌、树一流企业。

Accumulating strength and making effort,
infinite science-technology, continuous progress,
endless seeking,
creating the international brand,
establishing the first-class enterprise image.

上海雅森洗涤设备有限公司

上海雅森洗涤设备有限公司，创建于2003年，作为集成一体化制造研制洗涤设备的企业，生产洗涤设备的历史可以追溯到1991年。公司坐落于海纳百川的城市——上海。上海雅森是集洗涤设备研发 生产 制造 销售 洗涤化料提供、洗涤加盟连锁为一体的工业洗涤装备制造企业，拥有集成一体化的研发团队和制造实力。公司占地65亩，员工近百人，全国各地设有28个区域经销商和售后服务点，具备完善的市场和售后网络。

公司不断推出新型产品，填补多项国内行业空白。公司产品分为工业水洗机系列、上部装料，下部倾斜出料的前后双向倾斜IWS集成洗衣系统 前倾斜自动出料水洗机 全自动悬浮式洗脱机 水洗设备 洗涤设备 水洗房设备 酒店布草洗涤设备 贯通式烘干机 高速节能烘干机系列 环保型干洗机系列 高速双面烫烫机 高速烫平机 高速高精度折叠机 毛巾折叠机解决了布草被卡住后需要停工检修的问题。大型洗涤工厂研制出现代化绿色洗涤IWS集成洗衣系统。适合于更多品种布草洗涤 洗净度高 节省时间 节约人工 提高工作效率。采用上部自动装料分配系统+双向倾斜式洗脱机+穿梭机+贯通式烘干机的弹性组合模式，实现布草装料 洗涤 出料 烘干 输送等全过程的现代化机械自动化控制。

雅森IWS集成洗衣系统绿色环保 提高生产率 节约能源 节约水费 节省人工 通过综合节能帮您实现集成一体化洗涤设备工厂 智能机械化操作。洗涤辅助设备系列、毛皮脱脂机系列和洗涤化料系列等，遍布各大宾馆、饭店、医院、铁路、大专院校、社区及社会洗染业等等。公司机构客户包括北京同仁医院、北京第二社会福利院、上海特奥训练中心、上海政法学院、新疆建设兵团党校、厦门公交总公司，酒店客户包括维多利亚大酒店、碧桂园大酒店、维也纳国际酒店、托斯卡纳大酒店、王朝大酒店等。

公司干洗机、水洗机 折叠机系列产品科研项目。雅森公司TZ-全封闭环保型毛皮脱脂机系列团队还参与行业相关工业洗涤机械标准的起草和制订。

公司在全国设有几十个办事机构和经销点，产品远销世界各地，与加拿大、俄罗斯、澳大利亚、韩国、日本、埃及、印度、瑞士、越南、欧美、中东、东南亚建立有常年业务往来，积极建立合作伙伴关系。

上海欢迎您！雅森欢迎您！

地址：上海市松江区大江路258号
电话：021-57899088
网址：www.chinayasen.com



扫描查看集成系统样板



关注我们的微信公众号

About Us

Shanghai Yasen washing equipment Co., LTD., founded in 2003, as an integrated manufacturing and development of washing equipment enterprises, the production of washing equipment can be traced back to 1991. The company is located in the city of source-huangpu river - Shanghai. Shanghai Yasen is an industrial washing equipment manufacturing enterprise integrating washing equipment RESEARCH and development, production, sales, washing chemicals supply, washing franchise chain, with integrated research and development team and manufacturing strength. The company covers an area of 65 acres, nearly 100 employees, with 28 regional dealers and after-sales service points throughout the country, with a perfect market and after-sales network.

The company continues to launch new products to fill a number of domestic industry gaps. The company's products are divided into industrial washing machine series, upper charging, Lower slope before and after the discharge of two-way tilt IWS integration laundry system Tilt, the automatic washing machine Automatic suspension wash offline Washing equipment Washing equipment Washing room equipment Hotel linen washing equipment Energy saving through type dryer high-speed dryer series environmental protection dry cleaners The wrinkles in high-speed double-sided ironing machine high speed machine High speed and high precision folding machine The towel folding machine solves the problem of stopping for maintenance after the cloth is stuck. Large-scale washing plant developed modern green washing IWS integrated laundry system. Suitable for more varieties of linen washing, high cleanliness, save time, save manual and improve work efficiency.

Welcome to Shanghai ! Welcome to Yasen !

ADDRESS: No.258 Dajiang Rd, Songjiang District of Shanghai, China, 201699
WEBSITE: www.chinayasen.com
TELEPHONE: +86-21-57899088



有效证书和权威认证

追求品质的卓越与稳定

Available certificate and reputable authentication pursuing excellence and stability of quality

上海雅森洗涤设备有限公司从创立之初，就致力于技术前沿领域的创新和产品性能的开发。上海雅森曾前后被认定为上海市高新技术企业、上海市专精特新企业、上海市专利工作培育企业、国际洗涤行业协会副会长单位，并先后通过ISO19001:2016、GB/T-45001:2020，ISO45001:2018国际质量管理体系认证、欧盟CE认证、TUV莱茵认证，雅森产品曾申请了一些列产品知识产权证书并获得通过。



Shanghai Yasen Washing Equipment Co., Ltd is specialized in advanced and high-efficiency washing equipment manufacturing. Yasen has achieved honors such as National high-tech enterprise, Shanghai special new tech enterprise, Vice President enterprise of Washing Industry Association, Shanghai patent work cultivation enterprise, and has passed ISO9001, GB/ T-45001:2020, ISO45001:2018 and other international management system certification, The products of Yasen have obtained the European CE certification, TUV certification, etc., Yason has got the products applied for a number of intellectual property certificates and have been approved.

企业装备 Yasen Facilities

雅森公司拥有现代化的加工设备和先进的工艺装备，如德国产TruLaser3030激光切割机、日NISSHINBO产HPQ-3048高速数控转塔冲床、日本NISSHINBO产WENK-160/4100数控折弯机、日本NISSHINBOQC12K-6×4000数控剪板机、美国IHERMAL DYNAMICS产CN A80 NONCE高速数控等离子切割机、美国通用产CNCDG-3000高速数控火焰切割机、法国HL1500薄壁焊接筒体纵缝自动焊接机、HCT2500×2500环缝自动焊接机、HB1000自动焊接变位机等

Yasen company imported advanced processing facilities, such as laser cutting machine TruLaser 3030 from Germany, digital-controlled turret punching machine HPQ-3048, digital-controlled bending machine WENK-160/4100 and digital-controlled cutting machine QC12K-6×4000 from NISSHINBO of Japan, auto digital-controlled plasma cutting machine CN A80 NONCE from INERMAL DYNAMICS of USA, auto digital-controlled fire cutting machine CNCDG-3000 from GE of USA, automatic longitudinal seam welding machine HL1500, auto transverse seam welding machine HCT2500×2500 and auto positioner welding machine HB1000 from France etc.

日产高速数控转塔冲床
Digital-controlled turret punching machine from Japan



日产数控折弯机
Digital-controlled bending machine from Japan



德产数控激光切割机
Digital-controlled laser cutting machine from Germany



数控高速火焰切割机
Digital-controlled fire cutting machine from USA



日产数控剪板机
Digital-controlled cutting machine from Japan



雅森万米生产装配车间
Ten thousand meters workshop



产品质量检测 Product quality testing

雅森公司拥有完善的质量检测系统，公司建有设备质量检测中心，配备了拉伸试验机、冲击试验机、盐雾实验系统等全套式检测装备，保证了雅森产品从原材料进厂到整机出厂全过程的质量监控，从而有力地保证了产品质量。

Yasen company built a detecting system, equipped tensile testing machine, impact testing machine and dynamic balancing machine etc, so that the whole process from design, incoming material to the final products can be strictly inspected and controlled.



Contents

产品目录

01 水洗机系列 WASHING SERIES

- 01-04 SXT-F系列全自动工业洗脱机
SXT-F Series Full-Automatic Industry Washer-Extractor
- 05-06 SXT-FX系列全自动倾斜出料悬浮式洗脱机
SXT-FX Series Automatic Tilting Suspended Washer-Extractor
- 07-08 CX系列全自动隔离式洗脱机
CX Series Isolated-cabin Automatic Washer-Extractor

02 烘干机系列 DRYING SERIES

- 09-10 HG系列全自动烘干机
HG Series Full-automatic Dryer

03 后整理系列-输入 INPUT SERIES

- 11 SL系列自动送布机
SL Series Automatic Conveyer
- 12 ZB系列自动展布机
ZB Series Automatic Spreader

04 后整理系列-熨烫 IRONING SERIES

- 13-14 Y-Z/D系列滚筒式自动熨平机
Y-Z/D Series Roller Automatic Flatwork Ironer
- 15 GY系列高速槽式烫平机
GY Series High-Speed Chest Flatwork Ironer
- 16 YS-Z系列全自动高速多滚双面熨平机
YS-Z Series Automatic High Speed Multi-Roller Duplex Flatwork Ironer

05 后整理系列-折叠&堆码 FOLDING & STACK SERIES

- 17-18 ZD系列自动折叠机
ZD Series Folding Machine
- 19-20 FM系列自动毛巾折叠机
FM Series Automatic Towel Folder
- 21-22 DM系列自动堆码机
DM Series Automatic Stacker

06 干洗机系列 DRY-CLEANING SERIES

- 23-24 TZ系列全封闭环保型皮毛脱脂机
TZ Series Enclosed Automatic Leather Degreased Dry-Cleaning Machine
- 25-28 LS系列全封闭干洗机
LS Series Full-Closed Dry-Cleaning Machine

07 洗涤辅助设备系列 Assisstive Machines Series, Equipments & Accessories

- 29-34 洗涤辅助设备系列
Assisstive Machines Series, Equipments & Accessories

SXT-F

系列全自动工业洗脱机

Series Full-Automatic Industry washer-extractor

用途:

SXT-F系列水洗脱干两用机适用于宾馆、饭店、医院、服装厂、工矿企业以及个体洗染行业。用于对各种棉织、毛纺、麻类、化纤、混纺等衣物织品的洗涤。

Use:

SXT-F Series Washer-extractor is suitable for hotel, restaurant, hospital, garment factory, industry-mining enterprise as well as individual washing-dyeing. It is used for washing cotton, wool, woolen, chemical fiber and other fabrics.



SXT-1000F

SXT-500F



简要说明:

电脑控制系统全自动控制

- SXT-F水洗机专业电脑控制系统，性能优越，功能强劲。内置30套可编自动程序和5套标准程序，人性化操作界面。
- 用户可根据实际情况对工作液位、洗涤温度、洗涤时间进行实时控制，充分满足各种工况下对布草的洗涤需求。

Short introduction: Full-automatic control by computer control system

- SXT-F washer-extractor has professional computer control system, excellent capacity and super function, it contains 30 programmable procedures and 5 standard programs, and all design is near to human feature.
- User can control work liquid-level, wash temperature, wash time, and efficiently satisfy with wash request in different situations.

高强度 表现非凡耐力

- 创新结构的高强度不锈钢内转笼设计，保证设备在大负荷工作状态下的非凡使用寿命。
- 采用先进的有限元优化设计外缸体，优质不锈钢制作(50-150kg)，抗腐蚀性强，坚固可靠。
- 与众不同的高强度大轴座与高精度短轴设计，大大减少横向震动力矩，主轴轴承高精度同心，经久耐用。
- 主轴密封技术荣获国家发明专利(专利号：ZL200820151088.7 200810040816.1)，双重防水设计，进口氟橡胶密封元件，独特隔舱设计，保护轴承并提高使用寿命。

High strength, long durability

- Creative structure from drum design of excellent stainless steel ensures that machine lifespan is prolonged during overload situation.
- Adopting advanced limit principle to design outer vat is made by stainless steel (50-150 kg), it can resist corrosion and have high stability.
- Different design of high-strength big shaft-pedestal and high-accuracy short shaft can effectively reduce transverse vibration moment. Bearing of major shaft adopt high accurate core, so that prolong use lifespan and durability.
- Seal technology of major shaft have acquired state invention patent, double design of water-proof, imported seal material of fluorine rubber, special compartment design, assuring that protect bearing and improve use lifespan.

SXT-F

系列全自动工业洗脱机

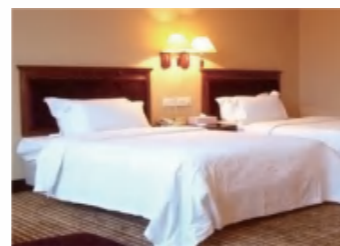
Series Full-Automatic Industry washer-extractor



SXT-150F



SXT-300F



主要技术参数 Main parameters

参数 Specification	型号 Model	单位 Unit	SXT-150F	SXT-200F	SXT-300F	SXT-500F	SXT-1000F	SXT-1300F	SXT-1500F
额定容量 Rated Capacity		kg	15	20	30	50	100	130	150
转笼 Drum									
直径 Diameter		mm	640	730	900	970	1200	1300	1470
径深 Diameter Depth		mm	480	450	470	650	888	980	880
转笼速度 Drum Speed									
洗涤 Washing		rpm	48	45	42	40	35	32	28
中/高脱 Low/High Extraction		rpm	810	800	770	750	670	650	620
电制 Power Supply		v/p/Hz	380/3/50	380/3/50	380/3/50	380/3/50	380/3/50	380/3/50	380/3/50
电机功率 Motor Power		kW	1.5	2.2	3	4	7.5	11	15
电加热功率 Electricity heating Power		kW	9	18	27	36	72	/	/
加热方式 Heating Type			蒸汽加热 Steam heating	蒸汽加热 Steam heating	蒸汽加热 Steam heating	蒸汽加热 Steam heating	蒸汽加热 Steam heating	蒸汽加热 Steam heating	蒸汽加热 Steam heating
蒸汽管口径 Steam Pipe		inch	G 3/ 4"	G 3/ 4"	G 3/ 4"	G1"	G1"	G1"	G 1 1/2"
蒸汽压力 Steam Pressure		MPa	0.4-0.6	0.4-0.6	0.4-0.6	0.4-0.6	0.4-0.6	0.4-0.6	0.4-0.6
冷/热水管口径 Cool/hot Water Pipe		inch	G3/ 4"	G3/ 4"	G1"	G 1 1/2"	G 1 1/2"	G2"	G2"
自来水压力 Tap Water Pressure		MPa	0.2-0.4	0.2-0.4	0.2-0.4	0.2-0.4	0.2-0.4	0.2-0.4	0.2-0.4
排水口 Drainage		mm	Φ76	Φ76	Φ90	Φ90	Φ127	Φ127	Φ140
压缩空气压力 Work Pressure of Compressed Air		MPa	0.4-0.6	0.4-0.6	0.4-0.6	0.4-0.6	0.4-0.6	0.4-0.6	0.4-0.6
噪音 Noise		dB(A)	< 78	< 78	< 78	< 78	< 78	< 78	< 78
整机重量 Machine Weight		kg	450	550	1500	2200	2900	3900	4900
外形尺寸(宽×深×高) Dimension(W×D×H)		mm	1100×1000×1550	1100×1050×1550	1440×1240×1750	1540×1815×1605	1910×2190×1982	2060×2330×2018	2320×2375×2215

注：本资料中的产品参数仅供参考，如有变动，以实际产品为准。
All specifications subject to change without notice.

修订日期：2022年9月

引领工业水洗机“微”震动时代

- 悬浮体的前端科学增加载荷配重，工作状态下悬浮体重心与激震源中心重合，达到悬浮体的最佳平衡。
- 避震系统的弹簧根据悬浮体前后震动不同恢复力矩特别设计，从而达到最佳的避震效率，有效减震率高达98%。

Leading slight vibration of industry washer

- Because of scientifically adding overload weight at the front of suspended object, gravity of suspended object and center of vibration source can combine in working state, so that reach perfect balance of suspended object.
- Spring of vibrationproof system adopt special design of recovery moment according to different vibration of suspended object front and back, so that finish the best vibrationproof efficiency and effective vibration-reducing rate to 98%.

精心设计 精良制作

- 变频驱动，无级调速，运行安静、稳定。
- 高品质轴承，经久耐用。
- 进口主轴密封元件，专利技术设计，有效抗高温和强酸碱工况。
- 不锈钢面板，超高防腐（后面板镀锌）
- 专利技术的安全门锁联动装置，确保安全。
- 5隔舱全自动加料系统，尼龙一体注塑结构，耐腐蚀性强。
- 大口径装载门人性化设计，方便装料和出料，减轻工作人员劳动强度。
- 蒸汽、热水加热可并用。

Excellent design and fine production

- Frequency-conversion drives, endless speed adjusting stable, quiet rum.
- High-quality bearing, long lifespan.
- Imported seal material of major shaft, patent technology design, effectively resists high temperature and super acid-alkali.
- Stainless steel panel, high corrosionproof (back panel is galvanization).
- Safe door-lock union device of patent technology ensure safety.
- Five compartment automatic detergent adding system, injection moulding structure of nylon combination, high corrosionproof.
- Larger diameter loading door and human design conveniently load and unload, so that reduces labor strength.
- Adopting steam heating, hot water heating.



SXT-FX

系列全自动倾斜出料悬浮式洗脱机 Automatic Tilting Suspended Washer Extractor

用途:

SXT-FX系列倾斜出料水洗脱干两用机是我公司在悬浮式洗脱机的基础上精心打造的,可极大程度地节省人力成本,适用于宾馆、饭店、医院、服装厂、工矿企业以及个体洗染行业

Use:

SXT-FX Series Tilting Washer-extractor when unloading is carefully built by our company based on the suspension washer-extractor, it can greatly save on labor, and this equipment is suitable for hotel, restaurant, garment factory, industry-mining enterprise as well as individual washing-dyeing. It is used for washing cotton, wool, woolen, chemical fiber and other fabrics.



主要技术参数 Main parameters

参数 Specification	型号 Model	单位 Unit	SXT-1000FX	SXT-1300FX	SXT-1500FX
额定容量 Rated Capacity		kg	100	130	150
取衣倾斜角度 Tilting Angle for unloading		Deg	25°	22°	20°
转笼直径×径深 Drum(D×L)		mm	Φ1200×888	Φ1300×980	Φ1470×880
洗涤转速 Washing speed		rpm	35	32	28
中/高脱转速 Low/High extracting speed		rpm	670	650	620
电制 Power Supply		v/p/Hz	380/3/50	380/3/50	380/3/50
电机功率 Motor Power		kW	7.5	11	15
加热方式 Heating Type			蒸汽加热 Steam heating	蒸汽加热 Steam heating	蒸汽加热 Steam heating
蒸汽管直径 Steam Pipe		inch	G1"	G1"	G 1½"
蒸汽压力 Steam Pressure		MPa	0.4-0.6	0.4-0.6	0.4-0.6
冷热水管直径 Cool/hot Water Pipe		inch	G 1½"	G2"	G2"
自来水压力 Tap Water Pressure		MPa	0.2-0.4	0.2-0.4	0.2-0.4
排水口 Drainage		mm	Φ127	Φ127	Φ140
压缩空气压力 Compressed air pressure		MPa	0.4-0.6	0.4-0.6	0.4-0.6
噪音水平 Noise Level of Running		db(A)	≤78	≤78	≤78
整机重量 Machine Weight		kg	3300	4200	5200
外形尺寸(宽×深×高) Dimension(W×D×H)		mm	2060×2545 ×2150	2210×2685 ×2185	2320×2375 ×2465

注: 本资料中的产品参数仅供参考, 如有变动, 以实际产品为准。 修订日期: 2021年11月
All specifications subject to change without notice.



简要说明:

全自动电脑控制

- 水洗机专业电脑控制系统, 性能优越, 功能强劲。内置可编自动程序和标准程序, 大屏幕液晶显示, 人性化操作界面。

高强度表现非凡耐力

- 荣获国家发明专利的主轴密封技术、高强度不锈钢内转笼、有限元优化设计外缸体和与众不同的高强度大轴座与高精度短轴设计, 保证设备在大负荷工作状态下的非凡使用寿命。

引领工业水洗机“微”震动时代

- 悬浮体科学增加载荷配重达到最佳平衡, 避震系统的弹簧根据悬浮体前后震动不同恢复力矩特别设计, 从而达到最佳的避震效率, 有效减震率高达98%。

精心设计精良制作

- 变频无极调速、高品质轴承, 运行安静、稳定、进口密封元件、不锈钢面板、独特材质加料系统, 有效对抗高温和强酸碱工况。专利技术的安全门锁联动装置, 确保安全; 大口径装入门人性化设计, 出料时自动倾斜, 极大地减轻工作人员劳动强度。

Full-automatic controlled by computer control system

- Tilting Washer-extractor has professional computer control system, excellent capacity and super function, it contains programmable procedures and standard programs, large-screen LCD, and all design in near to human feature.

High strength, long durability

- Steel technology of major shaft have acquired state invention patent, excellent stainless steel ensures, the outer vat designed by finite element optimal, different design of high-strength big shaft-pedestal and high-accuracy short shaft, ensure that machine's lifespan is prolonged during overload situation.

Leading slight vibration of industry washer

- Because of scientifically adding weight at the front of suspended object, so that reach perfect balance of suspended object. Spring of vibration proof system adopt special design of recovery moment according to different vibration of suspended object front and back, so that finish the best vibration proof efficiency and effective vibration-reducing rate to 98%.

Excellent design and fine production

- Frequency-conversion drives and endless speed adjusting stable, high-quality bearing, quietly rum. Imported seal material of major shaft, stainless steel panel, unique material feeding system, effectively against the high temperature and strong acid conditions. Safe door-lock union device of patent technology ensure safety; Larger diameter loading door and human design conveniently load and unload, auto tilting when unloading, so that reduces labor strength greatly.



CX-300

CX 系列自动隔离式洗脱机 Series Isolated-cabin Automatic Washer-Extractor

用途:

CX系列自动隔离式水洗机是适用于医院、卫生院、实验室等具有隔离需求的医疗机构的产品，其具有两侧通过性，使得洗涤区域可分为污染区和洁净区的隔离，避免了交叉感染。

Use:

The CX series automatic isolation washing machine is a product suitable for medical institutions with isolation requirements such as hospitals, health centers, laboratories, etc. It has two sides passing, so that the washing area can be divided into contaminated areas and clean areas, avoiding the isolation cross-infection.

产品特点 Product Features

- 电脑控制，全自动/手动可选，洗涤容量大，洗净率高，外形美观；
 - 双侧控制，避免洗涤剂再污染；
 - 结构先进，柔性避震，噪音、震动小；
 - 变频调速，操作简便，节能省电；
 - 适用范围广，增加了卫生隔离，满足对环境有严格要求的场合。
- Computer control, automatic/manual optional, large washing capacity, high washing rate, beautiful appearance
 - Bilateral control to avoid re-contamination of laundry
 - Advanced structure, flexible shock absorber, low noise and vibration
 - Frequency conversion speed regulation, easy operation, energy saving and electricity saving
 - It has a wide range of applications, increased sanitary isolation, and satisfies occasions with strict environmental requirements



CX-1000

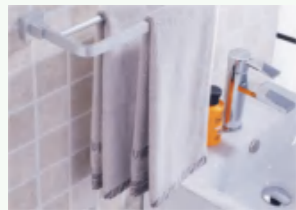
主要技术参数 Main parameters

参数 Specification	型号 Model	单位 Unit	CX-300	CX-500	CX-1000
额定容量 Rated Capacity		kg	30	50	100
转笼 Drum					
转笼直径×径深 Drum(D×L)		mm	Φ 800×670	Φ 800×1000	Φ 950×1420
洗涤转速 Washing speed		rpm	34	34	32
中/高脱转速 Low/High extracting speed		rpm	425/750	425/750	400/650
电制 Power Supply		v/p/Hz	380/3/50	380/3/50	380/3/50
电机功率 Motor Power		kW	4	5.5	7.5
加热方式 Heating Type			蒸汽加热 Steam heating	蒸汽加热 Steam heating	蒸汽加热 Steam heating
蒸汽管通径 Steam Pipe		inch	G1"	G1"	G1"
蒸汽压力 Steam Pressure		MPa	0.4-0.6	0.4-0.6	0.4-0.6
冷/热水管通径 Cool/hot Water Pipe		inch	G 1½"	G 1½"	G 1½"
自来水压力 Tap Water Pressure		MPa	0.2-0.4	0.2-0.4	0.2-0.4
排水口 Drainage		mm	Φ100	Φ100	Φ100
压缩空气压力 Compressed air pressure		MPa	0.4-0.6	0.4-0.6	0.4-0.6
噪音水平 Noise Level of Running		db(A)	≤80	≤80	≤80
整机重量 Machine Weight		kg	1570	1750	2500
外形尺寸(宽×深×高) Dimension(W×D×H)		mm	1800×1440 ×1270	1800×1770 ×1270	2100×2250 ×1500

注：本资料中的产品参数仅供参考，如有变动，以实际产品为准。
All specifications subject to change without notice.

修订日期：2021年11月

HG 系列全自动烘干机 Series Full-automatic Dryer



电脑控制、操作简单

- 电脑智能化全自动控制，可预置5套自动程序，用户可根据烘干的布草不同，进行多种温度、时间、正反转程序设定，精心呵护烘干过程中的布草。

运行稳定、维护简便

- 传动系统采用两级皮带传动，运行稳定，日常维护简便。
- 多翼式平衡风轮设计，不积毛绒，噪音低，运行平稳。

快速烘干、高效节能

- HG系列烘干机采用大规格热交换器，有效加热面大，升温快，干衣时间短。
- 内转笼采用高密度Φ8mm以上超大通风孔设计，确保热量穿过布草；并配比优化设计的排风量，热量利用更充足，使布草在短时间内得到充分烘干，并节能降耗。
- 转笼单、双向运转可设定，可防止大件布草的缠绕和出皱，使烘干效率质量最佳化。

人性化设计、安全便捷。

- 超大直径装衣门设计，装衣取衣轻松便捷；门体深度介入转笼对接口，避免布草刮伤。
- 抽屉式毛绒收集装置，拉出即可清洁，降低日常清洁劳度。
- 整机机体采用静电喷塑先进工艺，优质保温材料，防止热量散发，降低机体表面温度。

Human design, safety and convenience

- Super diameter design for loading door to bring convenience for loading clothes and unloading clothes, door depth is connected with drum interface to avoid damaging sheet.
- Drawer style of floss collection device to pull out for cleaning, so that reduce daily clean strength.
- Overall machine adopt advanced technology of static galvanization, excellent material of temperature-isolating to prevent heat from emanating for taking from machine face temperature.

Computer control and simple operation

- Computer intelligence computer, presetting 5 automatic programs is allowable, user can set temperature, time, REV according to different sheet, taking care for sheet during drying.

Stable running and simple maintenance

- Transfer system adopts double belt transmission to ensure stable running and bring simple daily maintenance.
- Multiple-wing balance wind wheel design to control deposit floss, low noise, stable running.

Fast drying, high efficiency and energy-saving

- HG series dryer adopt heat exchange device of large specification to effectively expand heating area, fast raise temperature, short drying time.
- Inner drum adopt super design of high-density ventilation over Φ8mm to ensure heat cross sheet and equipped with ventilation of refined design, effectively utilize heat to make sheet become dry during short time and save energy consumption.
- Single and dual direction of drum rotation can be set, intertwist and shrinking of large piece of sheet can be prevented to ensure high effective drying effect.



HG-300D



HG-2000Z



HG-1000Z

主要技术参数 Main parameters

参数 Specification	型号 Model	单位 Unit	HG-240Z	HG-300Z	HG-500Z	HG-700Z	HG-1000Z	HG-1600Z	HG-2000Z
			HG-240D	HG-300D	HG-500D	HG-700D	HG-1000D	HG-1600D	HG-2000D
额定容量 Rated Capacity		kg	12	15	25	35	50	80	100
转笼 Drum									
直径 Diameter		mm	750	750	960	960	1060	1200	1470
径深 Diameter depth		mm	500	650	650	880	1000	1000	1180
转笼速度 Drum Speed		rpm	48	48	40	38	35	30	28
电制 Power Supply		v/p/Hz	380/3/50 220/1/50	380/3/50 220/1/50	380/3/50	380/3/50	380/3/50	380/3/50	380/3/50
电机功率 Motor Power		kW	0.12	0.12	0.75	0.75	1.1	1.1	2.2
风机功率 Fan Motor Power		kW	0.33	0.33	0.55	0.75	1.1	1.5	1.5 × 2
加热方式 Heating type			蒸汽加热 Steam heating	蒸汽加热 Steam heating	蒸汽加热 Steam heating	蒸汽加热 Steam heating	蒸汽加热 Steam heating	蒸汽加热 Steam heating	蒸汽加热 Steam heating
			电加热 Electricity heating	电加热 Electricity heating	电加热 Electricity heating	电加热 Electricity heating	电加热 Electricity heating	电加热 Electricity heating	电加热 Electricity heating
电加热功率 Electric Heating Power		kW	7	7	20	32	35.2	54	54
蒸汽管口径 Steam Pipe diameter		mm	G 3/4"	G 3/4"	G 3/4"	G1"	G1"	G 1 1/2"	G 1 1/2"
蒸汽压力 Steam Pressure		MPa	0.4-0.6	0.4-0.6	0.4-0.6	0.4-0.6	0.4-0.6	0.4-0.6	0.4-0.6
整机重量 Machine Weight		kg	120	150	350	400	480	550	800
外形尺寸(宽×深×高) Dimension(W×D×H)		mm	850 × 880 × 1260	880 × 1130 × 1260	1060 × 1200 × 1970	1060 × 1550 × 1970	1160 × 1660 × 2100	1420 × 1500 × 2330	1550 × 1750 × 2400

注：本资料中的产品参数仅供参考，如有变动，以实际产品为准。
All specifications subject to change without notice.

修订日期：2021年11月



SL 系列自动送布机 Series Automatic Conveyor

SL-3300

简要说明:

SL系列高效送料机是专为熨平机提高布草熨平质量和提高送料效率而设计,适用于床单、被套、枕套等平面织物的送料工作。操作者只需将布草展开放置在进布台面上,送料机即可将布草吸入真空腔,从而将布草自动展开展平以传给熨平机,保证操作者快速处理下一条布草,大大提高送料质量和送料效率。

Short introduction:

YASEN SL Series sheet conveyor is designed to enhance the ironing quality and boost conveying sheets or linen. Users only spread the sheet and input it into platform, the conveyor will automatic conveyed to the ironer, which largely enhance the efficiency. The SL series is highly compatible with YASEN Y Series ironer.

主要技术参数 Main parameters

参数 Specification	型号 Model	单位 Unit	SL-3000	SL-3300
最大输送宽度 Max width		mm	3000	3300
输送速度 Speed		m/min	0-50	0-50
电机额定总功率 Rated power		kW	3.5	3.5
电压 Voltage		v/p/Hz	380/3/50	380/3/50
外形尺寸(宽×深×高) Dimension(W×D×H)		mm	4410 × 1380 × 1706	4410 × 1380 × 1706
整机重量 Weight		kg	680	690

修订日期: 2021年11月

注: 本资料中的产品参数仅供参考, 如有变动, 以实际产品为准。
All specifications subject to change without notice.



ZB 系列全自动展布机 Series Automatic Spreader

ZB-3300QIV

简要说明:

采用国际先进技术理念, 自主研发生产。是在床单、被套等织物进入熨平机前对其进行抹平和输送, 使织物在理想状态下进行熨平并折叠。广泛应用于宾馆、饭店、医院、铁路、大型社会洗涤厂等。

Short introduction:

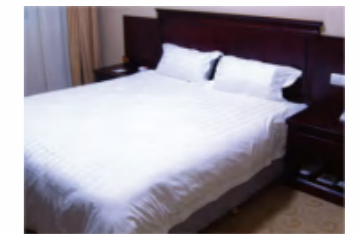
Being international advanced technology adopted, this equipment is developed independently. It is used to make linen, such as quilt cover and sheet, smooth and transfer them to ironing machine. It is well received by hotels, restaurants, hospitals, railway stations as well as washing plants in large communities and other units.

主要技术参数 Main parameters

参数 Specification	型号 Model	单位 Unit	ZB-3300QIV
最大输送宽度 Max width		mm	3300
输送速度 Speed		m/min	10-60
最大耗气量 Max air consumption		L/min	500
安装功率 Installation Power		kW	13
电压 Voltage		v/p/Hz	380/3/50
工位数量 Quantity of Operating Position		pcs	4
展布宽度 Width of Expanding		mm	1600-3300
压缩空气压力 Compressed air pressure		MPa	0.6
最大工作效率 Maximum Working Efficiency		pcs/hr.	800-1000
外形尺寸(宽×深×高) Dimension(W×D×H)		mm	5130 × 3120 × 2620
整机重量 Weight		kg	5000

修订日期: 2021年11月

注: 本资料中的产品参数仅供参考, 如有变动, 以实际产品为准。
All specifications subject to change without notice.



Y-Z/D 系列滚筒式自动熨平机 Series Roller Automatic Flatwork Ironer



Y-3000IIZ



用途:

Y系列滚筒式自动熨平机是本公司独立研制的新一代产品。适用于星级宾馆、酒店、医院、洗染工厂、工矿企事业单位等对洗涤脱水后的床单、被套、台布等各种平面织物进行熨平定型处理的理想设备。

Use:

Y series roller automatic flatwork ironer is new product developed by our company, it is suitable for star-level hotel, restaurant, hospital, washing-dyeing factory, industry-mining enterprise to make form-finish iron for flat fabric, bedsheet, bedcover and table cloth after washing and extracting.

简要说明:

- 本机采用变频调速(单滚为电磁调速), 用户可根据织物需要调节速度, 提升熨烫效率。
- 辊筒采用Φ800不锈钢制成, 各传送轴采用整体镀锌工艺处理, 延长整机使用寿命。

- 辊筒圆周约300度大包角的有效加热工作面积设计, 有效提升熨烫速度和充分利用热能, 降低能耗。
- 采用电机、减速器、链条传动, 结构简单, 维护方便, 传动准确可靠。
- 优化速差设计, 确保达到高品质的熨平效果。

Short introduction:

- This equipment adopt frequency-conversion for speed adjusting, customer can adjust speed according to fabric demand to improve ironing efficiency;
- Roller is made by stainless-steel Φ800, every transfer roller adopt galvanization technology to process for prolonging machine usage lifespan;

- Large angle shape of 300 degree roller circle effectively expand heating work area and improve ironing speed, effectively use heat energy, reduce energy consumption;
- Adopting motor, reducer, chain transfer, compact structure, convenient maintenance, accurate reliable transfer;

- 组合式多辊设计, 方便用户随产量增加而增加辊数, 无需添加设备台数和改制设备, 有效节省占地面积和人员配备, 降低运营成本。
- 本系列机型具有蒸汽加热和电加热两种加热形式可供选择。

- Excellent design for speed difference ensure high quality ironing effect;
- Composing multi-roller design, customer can conveniently add roller sum without adding equipment sum and changing equipment, effectively save occupation area and labor, reduce running cost;
- This series contain steam-heating and electricity-heating for selecting.

3000/3400

主要技术参数 Main parameters

参数 Specification	型号 Model	单位 Unit	Y-3000 IZ/D Y-3300 IZ/D	Y-3000IIZ/D Y-3300IIZ/D	Y-3000IIIZ Y-3300IIIZ	Y-3000IVZ Y-3300IVZ	Y-3000VZ Y-3300VZ	Y-3000VIZ Y-3300VIZ
最大熨平宽度 Max. Ironing Width		mm	3000/3300	3000/3300	3000/3300	3000/3300	3000/3300	3000/3300
辊筒直径 Diameter of Roll		mm	800	800	800	800	800	800
辊筒数量 No. of Rolls			1	2	3	4	5	6
熨烫速度 Ironing Speed		m/min	0-9	0-15	0-22	0-30	0-35	0-40
蒸汽压力 Steam Pressure		MPa	0.3-0.6	0.3-0.6	0.3-0.6	0.3-0.6	0.3-0.6	0.3-0.6
蒸汽管口径 Steam Pipe Diameter		inch	G 1½"	G 1½"	G 1½"	G 1½"	G 1½"	G 1½"
冷凝水接口 Condensate inlet		inch	G 1½"	G 1½"	G 1½"	G 1½"	G 1½"	G 1½"
电制 Power Supply		v/p/Hz	380/3/50	380/3/50	380/3/50	380/3/50	380/3/50	380/3/50
电机功率 Motor Power		kW	1.5	1.5	2.2	1.5 × 2	2.2 × 2	2.2 × 2
整机重量 Machine Weight		kg	2200/2400	3000/3400	3800/4400	4600/5400	5400/6400	6200/7200
外形尺寸(宽×深×高) Dimension(W×D×H)		mm	4080 × 1568 × 1302	4080 × 2508 × 1302	4080 × 3448 × 1302	4080 × 4338 × 1302	4080 × 5328 × 1302	4080 × 6268 × 1302
			4380 × 1568 × 1302	4380 × 2508 × 1302	4380 × 3448 × 1302	4380 × 4338 × 1302	4380 × 5328 × 1302	4380 × 6268 × 1302

注: 本资料中的产品参数仅供参考, 如有变动, 以实际产品为准。
All specifications subject to change without notice.

修订日期: 2021年11月



GY 系列高速槽式熨平机 Series High-speed Chest Flatwork Ironer

用途:

GY系列高速槽式熨平机是本公司针对高星级宾馆、酒店用户精心研制的新一代产品。适用于对洗涤脱水后的床单、被套、台布等各种平面织物进行熨平定型处理,是中高端以上用户的首选产品。

Use:

GY series high-speed chest type of flatwork ironer is specially produced for customer of star-level hotel and restaurant, it is suitable for form-finishing for bedsheet, coversheet, table cloth and all flat fabric after washing and extracting, it is unique hi-tech product for high-medium customer.



GY-3300II

简要说明:

- 全自动电脑控制,智能6路温度检测和故障报警系统,使用更安全可靠。
- 采用先进的双槽加热,独特的加热槽设计和高效加热过桥,有效保证了熨烫品质。
- 排风系统的优化设计,确保快速烘干织物又最大限度地减少热能损耗。
- 大角度的加热槽弧面包络角,加热面积大,可调整槽配合结构,保证辊槽间最佳吻合,热能利用率更高。
- 独特的皮带传动结构,维护简便,运行平稳。
- 荣获国家实用新型和发明专利(专利号:ZL200820151089.1)的安全气路设计,确保在急停、突然断电和停机断气等状态下均能够自动抬升压辊,符合国际安全标准。

- 变频调速,用户可根据蒸汽压力、布草种类和含水率等工况进行无级变速调节。
- 进口无忧荒、烫毡,确保用户使用无忧。
- 单电机驱动系统,体现更低功耗。

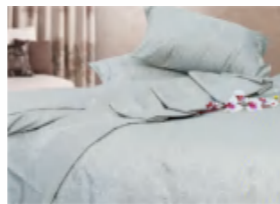
Short introduction:

- Full-automatic computer control, intellectual 6-way temperature checking and breakdown alarm system, so that result in safety and reliability;
- Adopting advanced heating of double chest, special design of heating chest and high efficiency heating getting across bridge, effectively assure ironing quality;
- Excellent design for ventilation system ensure fast iron fabric and effectively reduce consumption of heat energy;

- Heating chest of large angle and arc angle shape, wide heating area, adjustable roller-chest composing structure to ensure roller-chest can be perfectly combined, so that efficiently use heat energy;
- Special belt transfer structure, convenient maintenance, stable running;
- Safe air-way design acquire state practice new-style patent and invention patent for ensuring automatically raise roller during emergent stop, emergent power cut, and machine stop, satisfying with state safety standard;
- Frequency conversion speed adjusting, customer can adjust speed according to steam pressure, sheet kind and rate of containing water;
- Imported spring ironing felt ensure use effect;
- Single motor drive system brings lower power consumption.

主要技术参数 Main parameters

参数 Specification	型号 Model	单位 Unit	GY-3000II	GY-3300II
最大熨平宽度 Max.ironing Width		mm	3000	3000
辊筒直径 Diameter of Roll		mm	800	800
辊筒数量 No. of Rolls		pcs	2	2
熨烫速度 Ironing Speed		m/min	3-30	3-30
蒸汽压力 Steam Pressure		MPa	0.6-0.9	0.6-0.9
蒸汽管口径 Steam Pipe Diameter		inch	G2"	G2"
冷凝水接口 Condensate inlet		inch	G2"	G2"
蒸汽耗量 Steam Consumption		Kg/h	165	165
排风口 Air Output Diameter		mm	Φ200	Φ200
排风量 Air Output Sum		m ³ /h	2500	2500
压缩空气压力 Work Pressure of Compressed Air		MPa	0.55-0.7	0.55-0.7
压缩空气耗量 Consumption of Compressed Air		L/h	70	70
电制 Power Supply		v/p/Hz	380/3/50	380/3/50
电机功率 Main Motor Power		kW	7.5	7.5
风机功率 Fan Motor Power		kW	2.2	2.2
整机重量 Machine Weight		kg	6350	6550
外形尺寸(宽×深×高) Dimension(W×D×H)		mm	4492×2820×1460	4792X2820X1400



注:本资料中的产品参数仅供参考,如有变动,以实际产品为准。
All specifications subject to change without notice.

YS-Z 系列全自动高速多滚双面熨平机 Automatic high speed multi-roller duplex flatwork Ironer



YS-3300VIZ

用途:

YS系列全自动高速多滚双面熨平机是我公司结合中外技术研制开发的新一代产品,为中国首创。适用于星级酒店、宾馆、医院、铁路、大型洗涤中心、社会洗涤工厂、企事业单位等。是对洗涤脱水后的床单、被套、台布等各种织物进行双面熨平定型处理的新一代理想设备。

Use:

YS series Automatic high speed multi-roller duplex flatwork ironing machine is new product developed by our company with Sino-foreign technology. It is suitable for star-level hotel, restaurant, hospital, railway, larger washing center, washing-dyeing factory, industry-mining enterprise and so on. It is used to make ironing and form-finishing for flat fabrics, like bedsheet, bedcover and table cloth after washing and extracting.

简要说明:

- 对织物进行高效双面无痕熨烫、定型,确保高品质熨平效果。
- 本机采用高精度304不锈钢压力容器滚筒制成,使用寿命长。
- 采用变频无级调速,用户可根据不同织物需要调整熨平速度,提高熨烫效率。
- 采用可编程电脑控制,多语言控制面板,超大屏幕液晶显示,人机对话界面,操作简单。

- 采用变频电机、减速机、链条传动,运行平稳可靠;配有缓冲器、自动调布输送系统,无需导向带,传送精准。
- 安全电气设计,可紧急制停设备,确保操作人员的安全。

主要技术参数 Main parameters

参数 Specification	型号 Model	单位 Unit	Y-8033IVS	Y-6833VIS	Y-8033VIS	Y-6833VIT
熨烫形式 Ironing type				"S"型双面 "S" type duplex		"S"型双面 强节能导热油型 "S" Type Duplex Conduction Oil Energy Saver
最大熨平宽度 Max.ironing width		mm	3300	3300	3300	3300
滚筒直径 Diameter of roller		mm	800	680	800	680
滚筒数量 No. of roller			4	6	6	6
熨平速度 Ironing speed		m/min	10-40	10-50	10-60	10-50
蒸汽压力 Steam Pressure		MPa	0.3-1.0	0.3-1.0	0.3-1.0	0.3-1.0
蒸汽管口径 Steam Pipe Diameter		mm	DN50	DN50	DN50	DN50
冷凝水接口 Cooling water inlet		mm	DN50	DN50	DN50	DN50
电制 Power supply		v/p/Hz	380/3/50	380/3/50	380/3/50	380/3/50
电机功率 Motor power		kW	5.15	5.25	7.35	5.25
整机重量 Weight		kg	11000	13000	16000	13800
外形尺寸(宽×深×高) Dimension(W×D×H)		mm	4640×4106×1946	4640×4820×1658	4640×5742×1946	4640×4820×1658
导热油工作温度 Conduction Oil Working temperature		°C				180-220
配套锅炉功率 Ancillary Boiler Power		×10 ⁴ kcal/h				30
导热油进出口 Conduction Oil Inlet & Outlet Pipe Diameter		mm				DN80

注:本资料中的产品参数仅供参考,如有变动,以实际产品为准。
All specifications subject to change without notice.

修订日期:2022年9月

Short introduction:

- Efficiently ironing the fabrics with duplex and no trace, to ensure high-quality ironing effect.
- This equipment is made of high-precision 304 stainless steel drum, long service life.
- Frequency conversion drives, users can adjust ironing speed depend on different fabrics, improve the ironing efficiency.
- Programmable computer controlled, multi-language control panel, large screen LCD, man-machine interface, easy to operate.
- Using frequency-conversion motor, reducer, chains transmission, run smoothly; equipped buffer, auto adjustment conveying system, no need guide strips, precise convey.
- Safe electrical-pneumatic design, can stop machine in emergency, to ensure operators safety

ZD 系列自动折叠机 Automatic Folding Machine



ZD-3000V

用途:

ZD-3000V自动折叠机适用于与各种熨平机对接使用，是熨平机的后续配套设备。用于对熨平机输出的平面织物进行自动折叠并输出。

Use:

ZD-3000V automatic folder is suitable for connecting with all kind of flatwork ironer and perfect connection equipment with flatwork ironer; it can automatically fold and output flat fabric from flatwork ironer.

主要技术参数 Main parameters

Specification Model 型号 单位 Unit	最大折叠宽度 Maximum folding width	最大折叠长度 Maximum folding Length	折叠速度 Folding Speed	额定电压 Rated voltage	电机功率 Motor power	进气压力 Inlet pressure	耗气量 Air consumption	整机重量 Machine Weight	外形尺寸(长×宽×高) Dimension(L×W×H)
ZD-3000V	3000	3600	0-60	AC380/50	1.47	0.5-0.7	60	1580	4255 × 3052 × 1900
ZD-3300V	3300	3600	0-60	AC380/50	1.47	0.5-0.7	60	1600	4255 × 3052 × 1900

注：本资料中的产品参数仅供参考，如有变动，以实际产品为准。
All specifications subject to change without notice.

修订日期：2021年11月



简要说明:

- 采用大屏幕液晶显示及智能化控制系统，具有良好的人机对话界面。
- 两横三纵具有5次折叠，最多32层折叠功能。
- 折叠动作由气流、闸刀动作交相完成，确保折叠质量。
- 采用智能化PLC控制系统和变频器、微处理机电脑组成操作系统，计算精确，判别与动作输出准确，确保折叠精度。
- 进口光电检测和传感零配件，灵敏精确；24V低压控制电路，安全可靠，维护方便。

- 用户可根据布草幅面大小，随意选择一折、两折、五折输出。
- 适合于与各类型堆码机连接使用。
- 可根据用户需求，订制双通道和四通道功能折叠机。

Short introduction:

- Adopting big LCD screen and intelligent control system for ensuring perfect dialogue of human-machine;
- Dual-transverse and three-longitudinal system result in 5 times of fold, max folding function can be 32 layers;

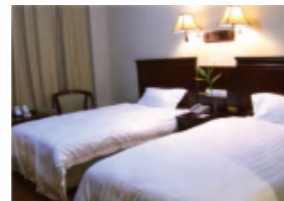
- Finishing fold task by intersection of airflow and strobe for ensuring folder quality;
- Adopting intellectual PLC control system, frequency converter and micro-computer control system for ensuring calculation accuracy, output accuracy of judgement and action, so that result in accurate fold quality;
- Imported photo-electricity checking and sensor spare parts, acute and accurate, control circuitry of 24V low voltage, safety and reliability, convenient maintenance;
- Customer can randomly select one-fold, two-folder and five-fold according to sheet area;
- This equipment is suitable for connecting with all kind of palletizer;
- Dual channel and four channel folder can be fabricated according to customer demand.





FM-1200

FM 系列全自动毛巾折叠机 Automatic towel folder



主要技术参数 Main parameters

参数 Specification	型号 Model	单位 Unit	MJ-1200
折叠前最大尺寸(宽×长) Max.size of towel before folding (W×L)		mm	1200×2200
运行速度 Working Speed		m/min	50
耗气量 Air consumption		L/piece	6
电源 Power supply		v/p/Hz	380/3/50
安装功率 Rated power		kW	2.1
压缩空气连接压力 Externally connected compressed air connection		MPa	0.5-0.7
工作能力 Capacity		Pcs/h	800-1000
整机重量 Weight		kg	1000
整机外形(宽×深×高) Machine dimension(W×D×H)		mm	1400×3850 ×1450

注：本资料中的产品参数仅供参考，如有变动，以实际产品为准。 修订日期：2021年11月
All specifications subject to change without notice.

简要说明:

- 采用大屏幕点阵液晶显示及智能化控制系统，并具有多种语言的人机对话界面，操作方便。机器有精确的感应器能自动识别毛巾大小，并自动调整合适的折叠宽度，通过横折板进行横折折叠。机器通过转轴上的编码器自动测量毛巾长度，并判定毛巾折叠方式，通过特有的正反转和吹气装置来实现毛巾的第一次纵折折叠。
- 创新设计自动适应不同毛巾的折叠厚度，确保不同厚度毛巾的折叠效果，并顺利进入第二次纵折折叠。
- 第二次纵折折叠也是通过特有的正反转和吹气装置来实现的，并增加了可调的传送平台倾斜度来确保毛巾的折叠效果。
- 出料精确定位、自动技术堆码、响应速度快、工作周期短。
- 控制系统，是采用多种智能控制技术，结合当今国际计算机、通讯、控制等领域的最新科技针对毛巾的实际需求而设计、制造的。个性化的嵌入式软件和智能化的综合监测功能。
- 可根据不同客户的需求进行编程控制，可实现手动、自动的多种模式，操作简单，自动化程度高，适应毛巾种类多。
- 在堆码出料时，采用了一种自动伸缩装置，通过该装置，控制传送带的伸出和缩进，并保证其运行方向不变，以确保堆码后的多块毛巾能通过传送带平稳地进入到下一道输送带上。

Short introduction:

- Auto control with big LED screen and multi-language interface.
- The sizes of towels can be detected and the folding width can be adjusted by the sensor. Lateral folding is done with relative folding blade.
- The length of towels can be measured with the coder on the revolving shaft and the folding mode can be automatically decided. The first cross fold is done via running in both directions and blowing system.
- The structure innovatively designed is adaptable to different thickness of towels and ensure good result of folding and enter the second fold smoothly.
- The second cross fold is done also via motor running in both directions and blowing system with adding the adjustable tilting degree of the conveying terrace so that the folding result is ensured.
- Output positioned accurately. Auto counter for stacking. Fast respond. Short work cycle.
- Combined with international advanced technology on the fields of computer, communication and controlling, the multi-intelligent controlling system is designed specially for towel folding, which can be surveilled and controlled via net, and has the functions of characteristic embedded software and comprehensive intelligent surveillance.
- Programmable, auto and manual modes available.
- An auto retractor device is installed at end of stack, which can control the transfer belts stretch out and retract without change of direction so as to smoothly transport stacked towel of mul-piece to the next transfer belts.

DM Series

自动堆码机 Automatic Stacker



DM-1000

设备简介 Product Introduction

本产品由公司自主研发生产，与折叠机配套使用，是对折叠完的布草进行计数、堆垛和输出，主要为满足现代化室内洗衣房对折叠完织物的后处理要求。其最大的优点是不受场地限制并可随时提供堆叠处理，最适合宾馆、饭店、医院和洗衣厂等对床单类织物进行堆叠处理的要求。

The YASEN DM-1000 automatic stacker is elaborately researched product, which is compatible with YASEN ZD Series automatic folder. The automatic counting and stacking function will help users to stack multiple linen and sort it. YASEN DM-1000 Series automatic stacker is ideal equipment for laundries in hospitals, hotels and washing plants.

主要特点 Features

- 堆码机自动化程度高，操作简单，降低工人的劳动强度。
- 折叠完的布草直接进入堆码机，机器采用可开启式结构，操作者可以监视堆码情况。
- 电脑控制，可以设置堆码数量。
- 设备结构紧凑，小型化设计可以节约空间。
- 采用平皮带传输，工作噪音值较低。
- High automation, easy operation, enhance labor working efficiency.
- Specially designed open-type scale, users may easy to monitoring whole stacking process.
- Computer control, users may set the range of stacking numbers.
- Compact structure, space saver.
- Working with belt, low noise level.

主要技术参数 Main parameters

Specification 参数 Model 型号	最大堆叠宽度 Maximum Stacking width	堆叠数量 Stacking Capacity	折叠速度 Folding Speed	电制 Power Supply	额定功率 Rated power	整机重量 Machine Weight	外形尺寸(长×宽×高) Dimension(L×W×H)
单位 Unit	mm	pcs	m	v/p/Hz	kW	kg	mm
DM-1000	1000	1-10	0-60	380/3/50	0.32	280	3385 × 850 × 1038

注：本资料中的产品参数仅供参考，如有变动，以实际产品为准。
All specifications subject to change without notice.

修订日期：2021年11月



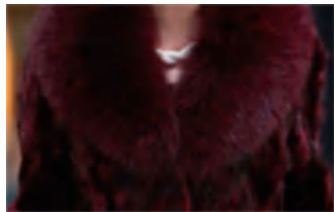
客户案例展示 Customer Cases Exhibiton



LS Series

系列全封闭干洗机

Full-Closed Dry-Cleaning Machine



LS 820 Plus

产品简介 Product Introduction

雅森LS800系列全封闭环保型高端干洗机是我公司引进欧洲先进技术的基础上，结合国内高端用户需求最新研制开发的新一代健康、环保、节能、高效的全封闭四氯乙烯干洗机。其具有极佳的环保性能、极低的洗涤溶剂消耗率、超凡的使用经济性和持久的使用寿命，是各类中高端干洗服务供应商和集中化干洗工厂的理想选择。

YASEN LS 800 Series Automatic Full-Closed Dry Cleaner is the new generation product based on the 20-years research and manufacturing experience as well as latest technologies. LS Series Automatic Full-Closed Dry Cleaner featured economy, high-efficiency, and energy-saving, which make it the ideal product for the wash factory, hotel, and laundry.



主要特点 Features

- 配备8英寸高清真彩触摸屏电脑，全自动智能化控制，功能完善，专业强劲，可预置几十套可编辑自动程序和手动操作系统全工况实时显示，人机对话，操作简单明了。
- 高性能全封闭制冷回收系统，美国进口的谷轮压缩机，烘干回收彻底。配置高端热泵系统，预热烘干时循环气体，大大降低烘干加热能耗和冷却水耗量。
- 欧洲最新技术风道结构设计，全新节能静音的“超大涡轮”风叶，使衣物烘干时间减少30%以上，干洗溶剂耗量比普通干洗机降低数倍以上。
- 国际领先的蒸馏热能回收系统技术，能将蒸馏时产生的高温溶剂气体用于烘干衣物，既减少热能损耗90%以上，又节约60%以上冷却水用量。
- 大容量炭吸附二次体外回收装置，将烘干完成后机器内部残留有干洗溶剂的气体，进行二次回收，使笼内残存四氯乙烯浓度达到≤300ppm，确保操作人员健康安全。
- 高性能双重过滤系统（高精度离心生态过滤器+大容量活性炭过滤器），有效保证干洗溶剂的高清洁度，给您带来超凡的洗净度。
- 大容量蒸馏箱设计，先进加热技术，热能利用率极高，节能省电，蒸馏彻底。并配有独创的蒸馏箱除臭功能，清理前箱内自动除味，避免人员吸入有害气体。
- 采用世界先进的变频调速控制系统，节省电力，降低噪音，运转更加平稳可靠。
- 配置干洗机专用变频电机，动力充沛，稳定可靠，节能安静。
- 主轴采用先进的免维护技术，配备国际一线品牌进口轴承，寿命非凡，减少维护。
- 装载门、绒毛收集器、纽扣收集器、蒸馏排污门均配有气动安全门锁装置，操作安全无忧。开门前自动真空吸风除臭，避免人体吸入有害气体，确保操作维护人员健康安全。
- 机器设有自动助剂添加装置，可准确、定量添加洗涤助剂，方便快捷省心省力。



- 8-inch High-definition Touch Screen, Full-computer control; Advanced preset program for one-key wash process and meet different wash necessities; easy going interface, custom programming function available.
- New wind duct design, large turbo design to keep lower noise level, and reduce 30% of the dry time.
- High-performance dual filter system (High-accuracy centrifugal filter + High-capacity acticarbon filter), helps keep wash high quality.
- High capacity distill box, advanced heating technology will boost heat usage and power-saving. Uniquely designed deodorization function, protect operator from harmful gas.
- Frequency speed control, lower noise-level and high running stability.
- Principal axis is designed with maintenance-free technology, extend the endurance of the bearing.

- Advanced cooling system, solvent temperature adjustable, meet different washing needs according to the material of the suits/furs.
- Latest distill heat recycle technology, reutilization of the heat for drying, helps reduce 90% of heat loss and 60% consumption of cooling water.
- High capacity carbon absorption secondary recycle system, recycle solvent gas after dry process completed, keep wash cage solvent gas concentration =300 ppm before open, which will keep healthy and safe of the operator.
- High capacity triple solvent tanks, easy visual check, together with automatic clean system, reduce manual operations.
- In order to ensure safety, loading Door, Floss collector, distill waste discharge door and fastener collector are equipped with safety lock.
- Automatic applying system, which can automatically add washing auxiliary detergent.

LS Series

系列全封闭干洗机

Full-Closed Dry-Cleaning Machine

机型功能选配 OPTIONAL CONFIGURATION:

型号/配置 Configurations	LS 816 PLUS LS 820 PLUS LS 825 PLUS LS 830 PLUS (炭吸附皮毛两用型) Carbon adsorption multifunction type	LS 816 E LS 820 E LS 825 E LS 830 E (节能高配型) Energy saving pro type	LS 816 C LS 820 C LS 825 C LS 830 C (标准型) Standard type
8寸高清真彩触摸屏 8" HD Touch Screen	●	●	●
炭吸附二次回收 Carbon Adsorption Secondary Recycle System	●	◎	◎
皮毛两用功能 Suits/Furs Dual Wash Function	●	◎	◎
热泵系统 Heat Pump System	●	●	◎
蒸馏箱除臭 Deodorization	●	●	◎
蒸馏热能回收 Distilling Heat Recycle	●	●	◎
双过滤系统 Dual Filter System	●	●	●
自动助剂添加 Auto washing auxiliary detergent Apply function	●	●	●
防漏底盘 Leak-proof chassis	●	●	●

● - 标准配置 Standard Configuration

◎ - 可选配置 Optional Configuration



技术参数 Technical Specifications:

机器型号 Model	单位 Unit	LS 816 PLUS	LS 820 PLUS	LS 825 PLUS	LS 830 PLUS
洗涤溶剂 Solvent		C ₂ Cl ₄	C ₂ Cl ₄	C ₂ Cl ₄	C ₂ Cl ₄
额定容量 Rated Capacity	kg	16	20	25	30
转笼 Wash Drum					
转笼容积 Volume	lt	280	340	425	510
转笼直径 Diameter	mm	Φ900	Φ900	Φ900	Φ1000
转笼深度 Depth	mm	440	535	668	650
溶剂箱 Solvent tank					
1#箱容积 #1 Volume	lt	118	130	145	160
2#箱容积 #2 Volume	lt	118	130	145	160
3#箱容积 #3 Volume	lt	200	220	250	300
过滤器 Filter					
离心过滤器容积 Centrifugal Filter Volume	lt	50	60	60	60
炭过滤器容积 Carbon filter volume	lt	16	16	16	16
蒸馏箱 Distill Box					
蒸馏箱容积 Distill Box Volume	lt	196	220	220	280
转速 Rolling Speed					
洗涤转速 Washing Spd	rpm	变频可调			
甩干转速 Extracting Spd	rpm	Frequency Adjustable			
电源/功率 Power					
电制 Power supply	V/P/Hz	380/3/50	380/3/50	380/3/50	380/3/50
驱动电机 Drive motor	kW	2.2	3.0	4.0	4.0
制冷压缩机 Compressor	kW	4.8	4.8	4.8	6.0
风机 Fan motor	kW	1.5	1.5	1.5	2.2
液泵 Pump	kW	0.75	0.75	0.75	1.1
过滤器电机 Filter Motor	kW	0.55	0.55	0.55	0.55
炭吸附风机 Carbon adsorption fan	kW	1.1	1.1	1.1	1.1
烘干加热(电热) Drying(For Electrical Heating Model Only)	kW	6.0	6.0	/	/
蒸馏加热(电热) Distilling(For Electrical Heating Model Only)	kW	9.0	9.0	/	/
安装功率 Installation Power					
电加热型 Electrical Heating Model	kW	23.7	24.5	/	/
蒸汽加热型 Steam Heating Model	kW	8.7	9.5	10.5	12.5
压力(最大-最小) Pressure(Max.-Min.)					
蒸汽压力 Steam Pressure	Mpa	0.4-0.6	0.4-0.6	0.4-0.6	0.4-0.6
冷却水压力 Cooling Water Pressure	Mpa	0.2-0.4	0.2-0.4	0.2-0.4	0.2-0.4
压缩空气压力 Compressed Air Pressure	Mpa	0.3-0.6	0.3-0.6	0.3-0.6	0.3-0.6
外形尺寸 Dimension					
宽度 Length	mm	2015	2015	2015	2115
深度 Width	mm	1570	1662	1795	1780
高度 Height	mm	2250	2250	2250	2580
整机净重 Weight	kg	1850	2020	2280	2490

注: 本资料中的产品参数仅供参考, 如有变动, 以实际产品为准。
All specifications subject to change without notice.

YTT 系列熨烫台 Series Ironing Table



用途:

YTT系列自吸风熨烫台是与蒸气熨斗配套使用的一种高效熨烫工作台。采用高速电机，多翼叶轮，吸风力强，抽湿效果好，是整烫各类服装，提高产品档次必不可少的设备。

Use:

This series is self-absorbing airflow ironing table, it is high-efficiency, and usually works together with steam iron, it adopt high-speed electromotor and multi-vane impeller to make nice performance in absorbing airflow and dehumidifying. This machine is suitable for all kinds of fabric and is necessary equipment for improving quality of clothes.

主要技术参数 Main parameters

参数 Specification	产品型号 Model	单位 Unit	YTT-1300	YTT-1400	YTT-1800	YTT-C1
台面尺寸 Dimensions	mm		1300×700	1400×750	1800×750	1350×460
工作电压 Power	Wotor		380/220	380/220	380/220	380/220
电机功率 Wording Voltage	kW		0.37	0.37	0.55	0.37
吸风压强 Pressure of Wind Suction	Pa		>-150	>-150	>-150	>-150
噪音 Noise	dB(A)		<68	<68	<68	<68
净重 Net Weight	kg		52	54	68	60

注：本资料中的产品参数仅供参考，如有变动，以实际产品为准。
All specifications subject to change without notice.

FA 系列毛绒搜集器 Series Wool Collector



用途:

本产品将烘干后的废气中的毛绒进行搜集，有效降低排风管道中的毛绒、化纤纤维等容易堵塞的物体。其适合较多清洗含毛绒标的大型洗衣房，满足其对烘干设备管道搜集过滤要求。

Use:

This product collects the lint in the exhaust air after drying, and effectively reduces the lint and chemical fiber in the exhaust ducts that are easily blocked. It is suitable for large laundry rooms that wash more lint-containing labels, and meets the filtration requirements for drying equipment duct collection.

主要技术参数 Main parameters

参数 Specification	产品型号 Model	单位 Unit	FA-15
尺寸 Dimensions	mm		3928×1210×1430
压缩空气压力 Compressed Air Pressure	MPa		0.6-0.8
自来水压力 Water Pressure	MPa		0.2-0.4
最大流量 Maximum Qty of Flowing	CFM		15000
最大流量 Maximum Qty of Flowing	m ³ /h		25000
过滤网面积 Size of Filter	m ²		4.5
净重 Net Weight	kg		175
电源规格 Power	V/Hz/P		220/50/1

注：本资料中的产品参数仅供参考，如有变动，以实际产品为准。
All specifications subject to change without notice.

BZ 成衣立体包装机 Tridimensional garment packer

用途:

成衣立体包装机是对高档服装连同衣架套入塑料薄膜中，并在上部热合粘接和切断的半自动化设备。包装后的服装可有效地防止灰尘、油渍的污染。塑料袋包装可任意调节长度。适用于各种时装包装。

Use:

This machine can be used to put the high-class dresses with the clothes-rack into plastic film for heat stickup and cutting off at the upper end. Package dresses can effectively avoid the pollution of dust and oil sludge. The length of plastic packing bag can be regulated optionally.

主要技术参数 Main parameters

参数 Specification	产品型号 Model	单位 Unit	BZ
电源电压 Votage		V/Hz	AC220/50
功率 Power		W	150
塑料卷袋宽度 Plastic Sack width		mm	< 600
塑料卷袋 Plastic Sack		mm	0.15-0.3
塑料卷袋材料 Plastic sack material			聚乙烯, 聚丙烯 Polyethylene
体积 Volume		mm	800×580×1760
重量 Weight		kg	52

注：本资料中的产品参数仅供参考，如有变动，以实际产品为准。
All specifications subject to change without notice.



C-1A 人像整理机 Body form finisher

简要说明:

- 进口PLC控制，傻瓜式操作，亦可手动强制操作。独有的电脑工作程序设计，无论再存再复杂的衣物也可获得最满意的熨烫效果。
- 设有风压、肩宽、腰围、臀围、下摆、门襟高低调节机构，尺寸再小衣物如女装均可上机熨烫。
- 配装日本进口铝制导汽袖撑，袖部熨烫品质可与专业服装厂媲美，无木制袖撑使用时产生的死痕。
- 专利汽路设计，保证蒸汽质量。

Short introduction:

- Controlled by imported PLC computer, and convenient operation. Also, you can operated by manual. Particular computer control program design. No matter thick or thin cloth, you can get good effect.
- Have components that used to adjust wind pressure, shoulder wide, waistline, hipline, lap and front garment. Small garments like women' wear can be press by this former.
- This former adopt aluminum air bar japan-imported. The quality of cuff-press is professional. No mark in cloth.
- Patented pneumatic design, guarantee spray steam quality.

主要技术参数 Main parameters

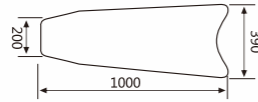
参数 Specification	产品型号 Model	单位 Unit	C-1A
熨烫部位 Part for Pressing			上装 Upper garment
蒸汽压力 Steam Pressure		MPa	0.4-0.5
蒸汽耗量 Steam Consumption Quantity		kg/h	25
外型尺寸 Size		mm	1300×500×1700
重量 Weight		kg	70
外配设备 Equipment Matched by Outside			蒸汽锅炉 Steam boiler
电压 Vlotage		V · Hz	220/50
功率 Power		kw	0.55

注：本资料中的产品参数仅供参考，如有变动，以实际产品为准。
All specifications subject to change without notice.



DYC-118

干洗万能夹机 Universal dry-cleaning pressing machine



简要说明:

- SIEMENS电脑控制, 傻瓜式操作, 亦可和动强制所需功能。
- 独有技术模头设计, 适用部位更准确。
- 垫料敷设方法合理, 再厚再薄的衣物, 甚至有铜钮的制服在烫时, 也不会损伤衣物及钮扣, 得到满意的熨烫品质。
- 专利式汽路, 让整机外观整洁, 预热时间只需5分钟。
- 配装浮筒式输水器。节汽效果优异。

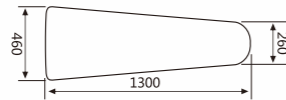
Short introduction:

- Controlled by imported SIEMENS computer, it is very easy to operate.
- With special designed mould, it can fit the part of garment that need to press.
- The method of applying cushion material is very reasonable. No matter how thick or thin the garment is, even the uniform with copper buttons, it will not damage the garment and buttons, You'll be satisfied with the ironing quality.
- Patented design of steam circuit, which makes the appearance of whole machine very tidy. Only need 5 minutes to preheat.
- Equipped with floating canister style draining machine, it is with efficient steam-saving effect.



QYC-203

水洗万能夹机 Universal washing pressing machine



简要说明:

- 布草脱水后可直接熨烫。
- 采用优质气动原件及合理的气路设计, 全压缩空气控制压烫工作, 无需外接电源, 工作稳定可靠安全。
- 8mm不锈钢抛光工作面, 汽压结构合理, 压烫吻合度好, 保证熨烫品质。
- 汽路设计简明有效, 升温快, 热损耗低。
- 可根据客户特殊要求定制。

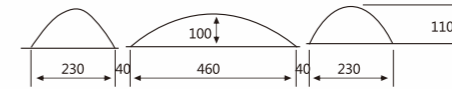
Short introduction:

- Be able to press directly after cloth dehydrated.
- Using high-quality pneumatic components and with reasonable designed steam circuit. It is controlled by compressed air. No need of outer power. It is stable, reliable and safe.
- With 8mm polished stainless steel plate and reasonable steam pressure, it can make sure of high-quality press and perfect goodness of fit.
- The design of steam circuit is very simple and efficient. Temperature rises fast and with low heat consumption.
- We can customize products according to your request.



DYC-207

水洗衣领袖夹机 Washing collar-sleeve pressing machine



简要说明:

- 布草脱水后可直接熨烫。
- 采用优质气动原件及合理的气路设计, 全压缩空气控制压烫工作, 无需外接电源, 工作稳定可靠安全。
- 6mm不锈钢抛光工作面, 汽压结构合理, 压烫吻合度好, 保证熨烫品质。
- 汽路设计简明有效, 升温快, 热损耗低。
- 可根据客户特殊要求定制。

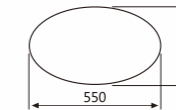
Short introduction:

- Be able to press directly after cloth dehydrated.
- Using high-quality pneumatic components and with reasonable designed steam circuit. It is controlled by compressed air. No need of outer power. It is stable, reliable and safe.
- With 6mm polished stainless steel plate and reasonable steam pressure, it can make sure of high-quality press and perfect goodness of fit.
- The design of steam circuit is very simple and efficient. Temperature rises fast and with low heat consumption.
- We can customize products according to your request.



QYC-206

水洗菌型夹机 Washing Fungform pressing machine



简要说明:

- 布草脱水后可直接熨烫。
- 采用优质气动原件及合理的气路设计, 全压缩空气控制压烫工作, 无需外接电源, 工作稳定可靠安全。
- 6mm不锈钢抛光工作面, 汽室结构合理, 压烫吻合度好, 保证熨烫品质。
- 汽路设计简明有效, 升温快, 热损耗低。
- 可根据客户特殊要求定制。

Short introduction:

- Be able to press directly after cloth dehydrated.
- Using high-quality pneumatic components and with reasonable designed steam circuit. It is controlled by compressed air. No need of outer power. It is stable, reliable and safe.
- With 6mm polished stainless steel plate and reasonable steam pressure, it can make sure of high-quality press and perfect goodness of fit.
- The design of steam circuit is very simple and efficient. Temperature rises fast and with low heat consumption.
- We can customize products according to your request.



主要技术参数 Main parameters

Specification 参数 MODEL 型号 单位 Unit	熨烫部位 Part of Pressing	蒸汽压力 Steam Pressure	蒸汽耗量 Steam Consumption Quantity	外型尺寸 Size	重量 Weight	外配设备 Equipment Matched from Outside	电压 Vlotage	功率 Power
DYC-118	万能 Universal	0.4-0.5	20	1200×1400×1400	250	蒸汽锅炉 Steam Boiler 空压机 Air Compressor 注: QYC-203建议外配抽湿泵	380/50	1.1
QYC-203	万能 Universal	0.4-0.5	25	1350×1400×1300	260			
QYC-207	领袖 Cuff & Sleeve	0.4-0.5	20	1200×1400×1300	230			
QYC-206	肩背 Shoulder & Back	0.4-0.5	15	1200×1400×1300	220			

注: 本资料中的产品参数仅供参考, 如有变动, 以实际产品为准。
All specifications subject to change without notice.

YTT 系列熨烫台 Series Ironing Table



用途:

YTT系列自吸风熨烫台是与蒸汽熨斗配套使用的一种高效熨烫工作台。采用高速电机，多翼叶轮，吸风力强，抽湿效果好，是整烫各类服装，提高产品档次必不可少的设备。

Use:

This series is self-absorbing airflow ironing table, it is high-efficiency, and usually works together with steam iron, it adopt high-speed electromotor and multi-vane impeller to make nice performance in absorbing airflow and dehumidifying. This machine is suitable for all kinds of fabric and is necessary equipment for improving quality of clothes.

主要技术参数 Main parameters

参数 Specification	产品型号Model	单位 Unit	YTT-1300	YTT-1400	YTT-1800	YTT-C1
台面尺寸 Dimensions		mm	1300×700	1400×750	1800×750	1350×460
工作电压 Power	Wotor		380/220	380/220	380/220	380/220
电机功率 Wording Voltage	kW		0.37	0.37	0.55	0.37
吸风压强 Pressure of Wind Suction	Pa		>-150	>-150	>-150	>-150
噪音 Noise	dB(A)		<68	<68	<68	<68
净重 Not Weight	kg		52	54	68	60

注：本资料中的产品参数仅供参考，如有变动，以实际产品为准。
All specifications subject to change without notice.

ZJF 系列自动蒸汽发生器 Series Automatic Steam-Generator



用途:

该系列电加热蒸汽发生器炉胆及贮水箱，供水泵用铜壳体不锈钢叶输的高压水泵压力大、噪音低，炉胆及贮水箱自动控制水位，自动供水，蒸汽压力自动控制在0.25MPa-0.35MPa，并装有保险安全阀，安装使用方便，电源、水源接通后约15分钟即可获得0.35MPa压力的蒸汽，蒸汽温度均匀，工作效率高。本产品具有制造许可证证书。

Use:

Oven and cistern of electric-heating steam-generator, brass stainless-steel leaf for supplying water make pump pressure of high pressure strong, noise low, through oven and cistern automatically to control water level and supply water. Steam pressure is controlled during 0.25 Mpa~0.35MPa, and installs insurance safety-valve, make installation and use convenient, power, water is put through. After 15 minutes, will supply 0.35MPa steam pressure. Meanwhile, steam temperature is symmetrical, having high-working efficiency, having acquired product patent certificate.

主要技术参数 Main parameters

参数 Specification	产品型号Model	单位 Unit	ZJF-4	ZJF-6	ZJF-9	ZJF-12	ZJF-18	ZJF-24
工作电压 Working Voltage	V		220	220/380	380	380	380	380
电热功率 Electrothermal Power	kW		3	3-6	3-6-9	6-12	9-18	12-24
最大许用压力 Max allowed pressure	MPa		0.4	0.4	0.4	0.4	0.4	0.4
产汽量 Steam Output	kg/h		4.5	9.0	14.0	18.0	28.0	36.0
外形尺寸 Exterior Dimension	mm		430×450×750	630×560×1360	630×560×1360	630×560×1360	630×560×1360	700×700×1450
净重量 Net Weight	kg		40	95	95	99	99	120

注：本资料中的产品参数仅供参考，如有变动，以实际产品为准。
All specifications subject to change without notice.

XYJ 系列衣服输送机 Clothing transportation machine



用途:

衣服输送机是我厂最新研制的高品质产品，产品工艺设计先进与进口同类产品相媲美。该机具有省电、低噪音、任意地方都可以摆放，多种形状可选择优点，是洗涤公司不可缺少的设备，是服装厂展示厅理想工具，此外，本厂可为顾客设计各种形状，任意件数挂口、为厂家设计安装流水线作业的挂架，让您达到意想不到的效果。

Use:

The machine is the high-quality produced newly researched and manufacture by our factory. Design of the product is advanced and can compare beauty with the imported product. The machine has the feature of saving electricity, Low noise, random arrangement and many optional shapes. It is the necessary equipment for washing companies and the ideal instrument for the exhibition hall of garment factories. The factory can design all kinds of shapes and the quantity of hanging hook for customers. The company also can design and install the hanging rack of flow lines for manufacture in order to reach the perfect effect.

主要技术参数 Main parameters

参数 Specification	产品型号Model	单位 Unit	XYJ-280	XYJ-308	XYJ-350	XYJ-560
电压 Voltage	V		220/380	220/380	220/380	220/380
功率 Power	Kw		0.55	0.55	0.75	1.1
挂数 Capacity	件Piece		280	308	350	560
尺寸 Size	mm		3230×800×2000	3560×800×2000	4100×800×2000	6600×800×2000

注：本资料中的产品参数仅供参考，如有变动，以实际产品为准。
All specifications subject to change without notice.



注：可定做特殊尺寸及以上几种形状
Size: can be fabricated according to customer request



GB-88E 系列冷热去渍台 Cold-hot stain removal table

用途:

- 配合去渍剂去除衣物在一般洗衣过程中难以祛除的各种顽固污渍，如：口红、油漆、血迹、墨水、酱油、咖啡、奶渍、果汁。
- 利用去渍枪，配合预处理剂完成洗前预处理。
- 完成洗衣后处理。

Use:

- To improve those tough stains on clothing before washing, for example, lip stick, paint, fruit juice, blood stain, ink, soy sauce, coffee and milk stain.
- Use stain removal spray gun with stain removal agent to do prewash preparation.
- Finish treatment after washing.

主要技术参数 Main parameters

参数 Specification	产品型号Model	单位 Unit	GB-88E
电源制式 Electrical Source Mode		V/Hz	AC220/50
电机功率 Power		kW	0.37
压缩空气压力 Compressed air Pressure		MPa	0.3-0.7
压缩空气接口尺寸 Compressed air Interface Size		mm	Φ6
蒸汽压力 Steam Pressure		MPa	0.15-0.5
蒸汽接口尺寸 Steam Interface Size		inch	1/2
机器总重 Overall Weight		kg	52
外形尺寸 Exterior Dimension		mm	1600×560×1850

注：本资料中的产品参数仅供参考，如有变动，以实际产品为准。
All specifications subject to change without notice.

简要说明:

- 设计结构合理，操作方便自如。
- 配有两把进口去渍枪，一把喷气枪。
- 喷气枪可冷热随意选择，去渍效果佳。

Short introduction:

- Excellent design with easy operation concept;
- Include 2 sets of imported stain removal spray gun and air-spraying gun;
- Air gun is with hot and cold air selection, it's effective for stain removal.

